






## Analytic Data Solutions, LLC

No assessment is ever alike, but the purpose of a planning assessment is common – i.e., to understand the overall ‘health state’ of the environment by examining the full technology landscape and business drivers. Analytic Data Solutions, LLC specializes in conducting comprehensive planning assessments producing complete, effective, and actionable outcomes; such as an analytic program plan.

Here are some examples why you would conduct a planning assessment:

-  *Planning to develop and/or enhance your analytic environment*
-  *Assessing your current environment for gaps and overall ‘health’ status*
-  *Preparing for a system upgrade and/or performance (capacity) evaluation*

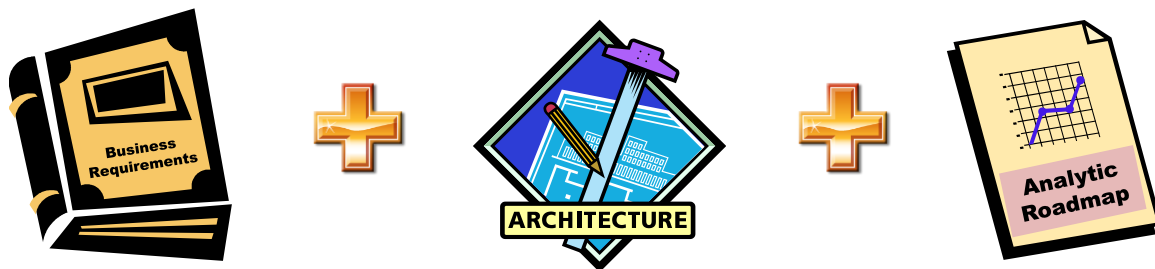
A strategic program plan, coupled with foundational components of the business drivers and the architecture blueprint, provides the means to execute the appropriate sequence of projects achieving timely and business value-add analytic solutions.

---

# Planning Assessments

The deliverables of a typical planning assessment consists of three components:

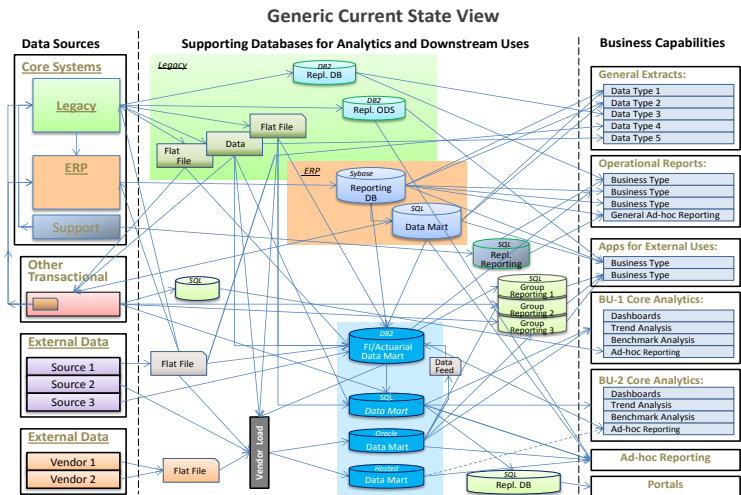
- **Business Requirements Document (BRD)** – *a complete set of business drivers and requirements based IT and business interviews that feeds into the future state architecture*
- **Architecture Blueprint** – *a comprehensive reference document containing both current state architecture (e.g., pain-points & gaps) and future state architecture (e.g., IT & business solutions)*
- **Analytic Roadmap** – *a complete analytic program plan (roadmap) outlining the sequence of projects and illustrating the foundational components and milestones*



The initial approach of an assessment is documenting the technology landscape and business capabilities. This is done via gathering existing documentation as well as conducting extensive interviews with IT and business stakeholders. After several ‘white board’ sessions and workshops, your current analytic state landscape starts taking shape. Coupled with IT and

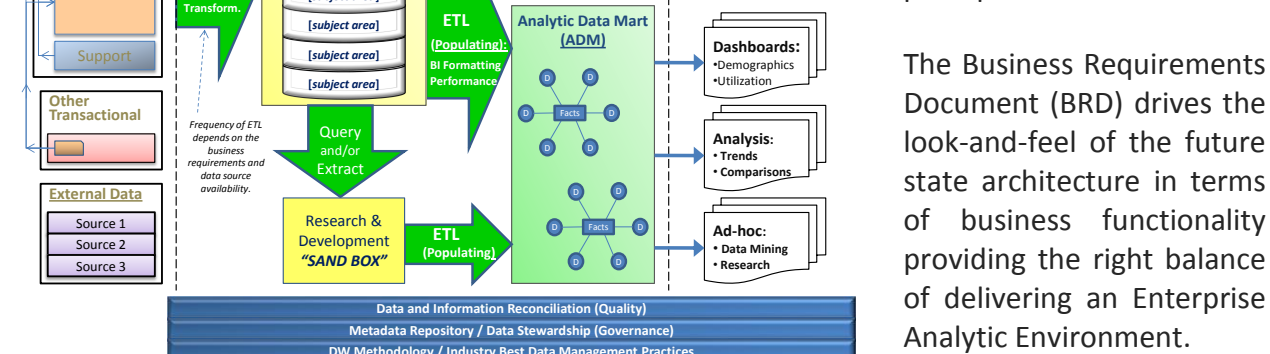
business interviews, the detail supporting each component or segment sharpen the accuracy of the current state architecture shown here.

The goal here is not to create solutions, but simply to reflect the current state of data integration and business capabilities or the lack of it. This way it is easy to detect data gaps and efficiency opportunities as well as leveraging existing technologies and processes. A significant data gap that surfaces from this diagram is the lack of accessibility and self-service. The next evolving step is coming up with a future state architecture depicting true data integration and business solutions while illustrating best practices and ensuring high quality.



The future state section of the Architecture Blueprint demonstrates the technology framework development requirements in both a three-tier architecture (storing/maintaining the data) and presentation architecture (report layouts/business processes).

The blueprint illustrates the necessary technology footprint, quality controls, metadata repository, and stewardship framework coupled with best practices and guiding principles.



**For more information: Contact Gary Hanson at 651-485-2312 or [ghanson@analyticdatasolutions.net](mailto:ghanson@analyticdatasolutions.net)**